

AXON 2000

DISPENSING
SOLUTIONS

Compact footprint. The greatest performance.

With outstanding electronics and hydraulics and a sleek design built by premium construction and materials, the AXON A2000 is the right choice for those who are looking for high performance but must deal with the limited space available at the forecourt.



Maximum efficiency aligned with a great user experience.

Hose retraction system and lifting solution for an easy handling

Solid Construction Frame

Touchscreen with a modern Look and Feel

Easier Maintenance and Serviceability

The A2000 is a multitasking and versatile model. The lateral hoses allow easy access to the 2 products at the same time.

Up to 130l / min
Multiple Fuel Types

Up to 2 Fuel Grades
Up to 12 hoses

Certificate: ATEX | MID

< 1000 kg (+/- 5%) kg

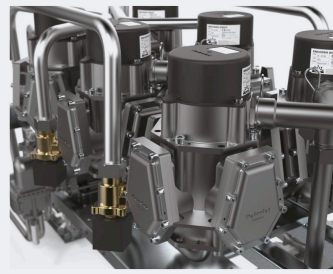
2200 x 800 x 800 mm





DURABLE AND LARGER DISPLAY

- Crisp digits under any lighting conditions
- Maximum flexibility with minimalist design
- Intuitive touchscreen



ENHANCED HIDRAULICS

- Aluminum alloy obtained through injection under pressure
- Inlet suction lines aligned for the entire range
- Meter with electronic calibration
- P-Flux connected to electronics for error management
- Quick coupling connection for the meter

TECHNICAL SPECIFICATIONS

Admission	Suction: High Performance Compact Gear Pump PPS Pressure: Submersible Pump
Meter	Positive displacement meter, with pulse generator
Filters	Reusable stainless steel, 100 µm mesh
Spin-On Filters (1)	Feature providing additional filtration capability for our equipment. <u>Key Features:</u> <ul style="list-style-type: none"> → Equipment comes with 30-micron filters as standard. → Filters are spin-on types, other micron ratings can be easily selected and installed. <u>Key Benefits:</u> <ul style="list-style-type: none"> → Ensures that lower-quality fuels or fuels with impurities are effectively filtered. → Reducing potential contamination and protecting the equipment's performance and longevity
Motor	Exd, single/three-phase, 50/60 Hz w/ internal thermal protection
Calculator	iMC
Hose	Ø16, 19, 21, 25 mm (EN1360/EN13483) (VR2 approved)
Nozzle	Automatic ZVA2 or others

Flow Rates	10, 40, 80, 130 l/min
Comm Protocols	Petrotec, EP55, Pulse Interface, ER3, IFSF IP, IFSF Lon, HDX 485 and HDX 2WI (Gilbarco), Dunclare, Pumalan, HDX IP (Tesco)
Display	Touchscreen • Tempered Glass • Volume and amount preset
Options	Speed Selector • Voice Module • Electro-mechanical totalizers • Volume and amount preset • Circuit breaker • Main safety switch (LPG) • Electronics head heating • Vapour recovery stage II • Vapour recovery with monitoring • Automatic temperature compensation • Single / Three Phase Motor • Satellite ready (1 per side) • Breakaway couplings • Custom nozzles and satellite, Flexible riser connection • Foundation frame • Custom corporate image • Stainless steel AISI316 housing EMERGENCY BUTTON: Feature providing additional filtration capability for our equipment. <u>Key Features:</u> <ul style="list-style-type: none"> → Quick and easy accessibility. → Complies with safety regulations. <u>Key Benefits:</u> <ul style="list-style-type: none"> → Protects equipment and personnel. → Reduces response time during critical events. → Enhances operational safety standards

(1) Only available for Pressure version

DIMENSIONS

